

Loc 5G system Engineered Flooring

General

HEPH Australian Signature is a floating timber floor, meaning that the edges of each board are joined to each other using the glueless 5G joining system, and are not fixed to the sub-floor. HEPH's Australian Signature floats over an approved 2mm foam underlay and can be installed over any sound, dry and level surface. An expansion gap must be left around the entire perimeter of the floor to allow for initial and seasonal expansion. The boards are generally installed along the length of the room with the ends of boards laid with a natural random stagger. A successful installation will rely heavily on strict adherence to these instructions. The two most common causes of failure are uneven subfloors, and inadequate expansion to the perimeter of the floor. An uneven subfloor may lead to movement of the flooring underfoot and within the joining system, resulting in excessive noise.

Tools Needed

An installation kit containing expansion wedges, a pulling iron and a tapping block. You will also require a jigsaw, pencil, hammer, tape measure, sharp "Stanley" type knife and small hand tools associated with woodworking. Along with your HEPH's Australian Signature you'll need your approved underlay, and enough trims to complete your floor. HEPH Flooring colour matched or aluminium trims are available in a range of shapes, profiles and colours from your local retailer.

Preparation

The first thing that you need to ensure is that the subfloor or surface that the HEPH's Australian Signature is being installed over is level. Using a 1 metre straightedge, the subfloor level should not exceed +/- 3mm over 1 lineal metre in any direction. Remember, uneven floors may lead to movement and noise, so it is necessary to assess the levelness and get it right. Timber subfloors can be sanded level, and concrete subfloors or existing floor coverings can usually be levelled using a self-levelling compound. HEPH's Australian Signature cannot be installed over carpet or carpet underlay but can be installed over well bonded vinyl, cork, ceramic tiles if sufficiently level. HEPH's Australian Signature must always be installed over a 2mm high quality, closed cell foam underlay and a continuous damp proof membrane. Door frames and architraves should be undercut prior to commencing installation using a scrap of flooring and a long, flexible hand saw. Undercut saws may be available from your local retailer and are specifically designed for this purpose. Work out the trims to be installed, as some trims are easier to install prior to the flooring. This will be dependent on the direction of the trim to the flooring and the type of trim to be installed. Your Australian Signature flooring should be given sufficient time to acclimatise (48 hrs) by placing the unopened boxes in the room where they are to be installed. Note - Do not open the packaging until you are ready to install. Each Australian Signature flooring board should be inspected prior to installation to ensure the quality is acceptable. Installation implies acceptance of the appearance of the floor, relating to features visible at purchase, once the products are installed. At all times, the temperature in the room should be between 18-26c and the recommended relative humidity in the room should be in the range of 40 -70%.

Note

As a natural material, timber is prone to movement with variations in moisture content, heat and relative humidity in the environment. The maximum width and length the product can be laid is 8 metres before additional expansion is required - widths and lengths beyond 8 metres require the rooms to be broken up and additional expansion allowance needs to be incorporated (1mm for every 1mtr).

Installation

1. First plank, first row. Place a 12 mm expansion gap (using a spacer) to the left and position the plank with a 12mm expansion gap against the wall using a spacer to maintain the gap.

2. Second plank, first row place this plank gently and tight to the short end of the first one, remembering to allow a 12mm expansion gap against the wall

3. Fold the plank down in a single action movement. During the fold down, make sure the planks are tight against each other. Afterwards press or gently knock at the short end just installed.

4. At the end of the first row, put a 12 mm expansion gap to the wall and measure the length of the last plank to fit.

5. Cut with a drop saw, jig saw or hand saw.

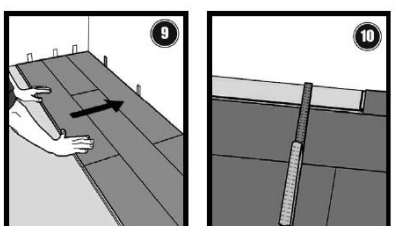
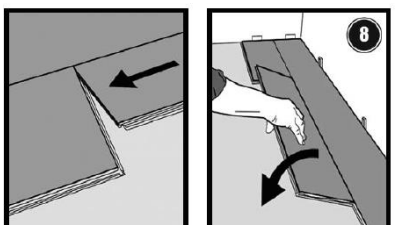
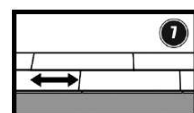
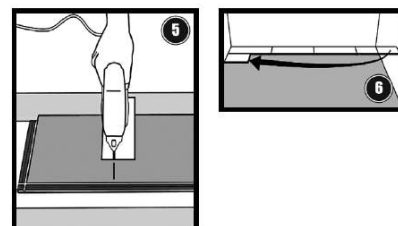
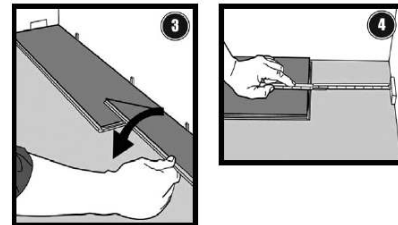
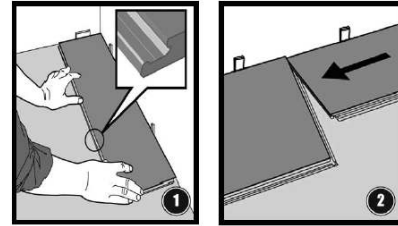
6. Second row. The off cut of the previous row can be used as the starting plank as long as it is at least 500mm long. Remember to place a 12mm spacer at the end for the expansion allowance.

7. Distances between ends. The minimum distance between plank ends in parallel rows is 400mm.

8. Second plank, second row. Place the plank gently and tight to the end of the previous plank and fold it down in a single action movement. During the fold down action, make sure the plank ends are tight against each other and press the end to ensure the 5G lock is engaged

9. After 2-3 rows. Check all expansion gaps (12mm) are in place and are being maintained at both ends and sides of the installation.

10. Last row. The minimum width of the final plank is 50 mm. Once your floor is complete, remember to ensure a 12mm expansion gap is left between the wall and the final plank. Remove all spacers around the installation to ensure the expansion gap is clear and unimpeded.

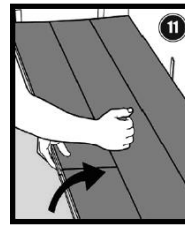


Disassembling (without tool)

Your floor can very easy be disassembled, which enables replacement during installation and also during use.

11. Separate the whole row by carefully lifting up and slightly knocking just above the joint. Fold up and release the whole side.

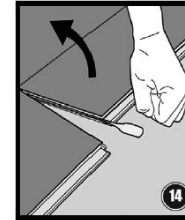
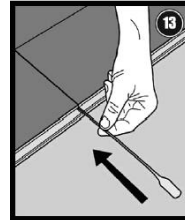
12. Disassemble the planks by sliding horizontally. (Do not fold up)



Disassembling with Valinge Release Tool

13. Place a special Valinge Release Tool into the joint.

14. Keep the left plank down to the floor and release the right plank - fold it up.

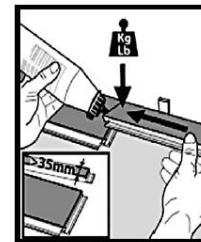


Special installations

Narrow plank widths with no 5G tongue on the end, first and/or last row
Joining at the ends, length cut planks, glue the joint with PVA glue.

Horizontal installation

Cut off the locking element with a chisel, and push the planks horizontally together. If necessary, place 12mm spacers between the last planks and the wall to keep the planks together during the curing time of the glue. Special Notes » 12mm is the minimum perimeter expansion gap for all applications. Larger floors or floors that will be exposed to higher levels of relative humidity will need larger expansion gaps. Some multiroom or very large installations will need expansion joints installed throughout the floor. In most cases, multi-room installations will need to be separated at doorways using connector trims, a range of which are available from your local retailer. HEPH Office will be able to advise you in this regard.

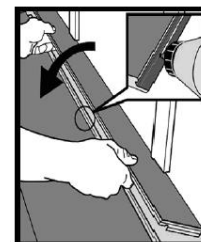
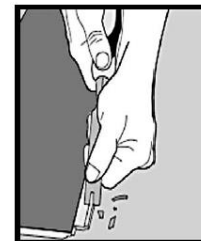


Special Notes

» 12mm is the minimum perimeter expansion gap for all applications. Larger floors or floors that will be exposed to higher levels of relative humidity will need larger expansion gaps. Some multiroom or very large installations will need expansion joints installed throughout the floor. In most cases, multi-room installations will need to be separated at doorways using connector trims, a range of which are available from your local retailer. HEPH Office will be able to advise you in this regard.

» HEPH Australian Signature can be direct stuck to a prepared subfloor. We recommend the use of a non etching, isocyanate free timber flooring adhesive used as instructed, along with their recommended ancillary products.

» When installing on stairs, glue both tread and riser using a recommended polyurethane or construction adhesive. No underlay should be used on tread or riser. Special stair nosing trims are also available for this application.



» HEPH is not designed to be exposed to extremes of humidity or temperature. It is important to note that floors exposed to such conditions may fail. Sensible protection of the flooring from such extremes, particularly in unoccupied homes, must be afforded. Measures can include curtains, awning, blinds, window tinting, and early commissioning and/or regular use of air conditioning or humidity control devices. Protection of the flooring from any radiant heat source should also be provided, eg: around combustion heaters and other heaters, as these generate extreme low humidity. HEPH Australian Signature should not be installed until these measures are in place, and should not be installed more than 2 weeks prior to occupation of the home. It is important to understand that any warranty, expressed or implied, may be voided if the floor is exposed to extreme conditions.

» It is the homeowner's responsibility to provide a moderate indoor environment in order to prevent cracking and distortion of the flooring, even when unoccupied.

After the installation

You can use the floor immediately after installation. The skirting boards must be fixed to the walls (never to the floor) to allow clear and unimpeded expansion